

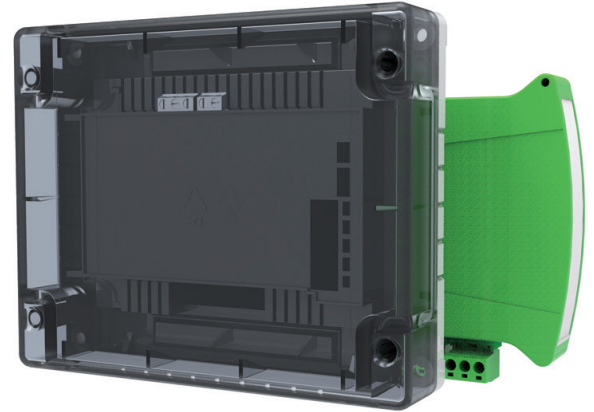
ESP Intelligent

CHQ-DRC2(SCI)

Analogue Dual Relay Controller with SCI

Features

- ▶ Loop Powered with Single Loop Address
- ▶ Provides 2 Independently controlled changeover relays
- ▶ Relays contact rated at 30 VDC at 1 A
- ▶ Auxiliary monitored input
- ▶ Also available as DIN
- ▶ Both models feature an integral SCI
- ▶ Deeper, glanded IP65 backbox available
- ▶ Can be used with CHQ-BACKBOX to comply with BS 7671
- ▶ Approved to AS ISO 7240.17 & 18
- ▶ Marine, SIL2 and Railway Approved variants available.



Description

Model CHQ-DRC2(SCI) is a Dual Relay Controller designed to provide two general-purpose relay outputs, each output can be driven separately for control of such devices as dampers or for control of plant and equipment shutdown. The monitored input can be used for local power supply fault monitoring or as a general purpose input.

The unit is also available as a DIN Rail mountable version; both models feature an integral short-circuit isolator. The CHQ-DRC2(SCI) utilises simple DIL switches for reliable addressing. A back box is also available (CHQ-BACKBOX) which, when used in conjunction with the CHQ-DRC2(SCI), increases the IP rating to IP65.

Specification

Ordering codes	CHQ-DRC2(SCI) - Module with SCI / CHQ-DRC2/DIN(SCI) - DIN Module with SCI		
Operating voltage	17-41 VDC		
Low power mode (0.75s)	170 μ A		
Quiescent current (typical)*1	300 μ A		
Current consumption	22 mA \pm 20 % (polling)		
Current in short-circuit	8 mA		
Maximum short-circuit current	1 A (loop)		
Relay contact rating	30 VDC max, 1A (resistive load)		
Input E.O.L. resistor	10 k Ω , \pm 5%, 0.25 W		
Input threshold level	ON=470 Ω , Short-circuit <50 Ω , Open-circuit >100 K Ω		
Operating temperature range	-10°C to + 50°C		
Storage temperature range	-30°C to + 60°C		
Maximum humidity	95%RH - Senza condensa (a 40°C)		
Weight (g) Dimensions (mm)	Module Enclosure	343 (add 235 to weight when using CHQ-BACKBOX)	L157 x W127 x D35 (Module & Lid) D79 (Module, Lid + CHQ-BACKBOX)
	DIN Enclosure	124	L119 x H108 x H24
Colour and material	CHQ Module & CHQ-BACKBOX White ABS, DIN Module Green ABS, Module Lid Semi-Opaque Black ABS as standard (white version – CHQ-LID(WHT) also available)		