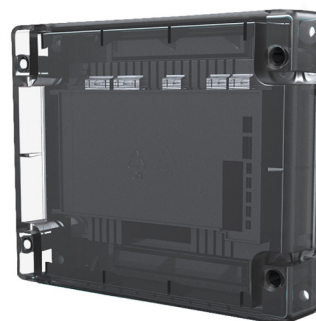


CHQ-MRC2(SCI)

Addressable Mains Relay Controller

Features

- ▶ Loop powered, with single loop address
- ▶ Single mains rated relay contact
- ▶ Relay Contact Rated at 250 VAC @ 5 A (resistive) & 48 VDC @2 A (resistive)
- ▶ Auxiliary monitored input
- ▶ DIN rail version available
- ▶ Both models feature an integral short-circuit isolator



Description

Model CHQ-MRC2(SCI) is a Single Input/Output Module, which provides a single, mains-rated relay output for the control of such as water shut down valves when used in a LEAKalarm water leak detection system installation.

The unit is also available as a DIN Rail mountable version; with an integral short-circuit isolator. The CHQ-MRC2(SCI) utilises simple DIL switches for reliable addressing.

Specification

| | | | |
|--|---|-----|---|
| Low Power Mode (0.75s) | 100 μ A | | |
| Quiescent Current | 300 μ A | | |
| Current Consumption | 22 mA \pm 20 % (polling) | | |
| Current in Short-Circuit | 8 mA | | |
| Maximum Short-Circuit Current | 1 A | | |
| Relay Contact Rating**** no fuses are fitted on this device. The relay output circuit must therefore be protected by a suitable over-current protection device to prevent excessive current through the relay contacts. Refer to the relay contact specification in this document. | 48 VDC max, 2 A (resistive load), 250 VAC max, 5 A (resistive load) – For mains ac switching, the Control Panel must be compliant with Low Voltage Directive for SELV circuits. | | |
| Input E.O.L. Resistor | 10 k Ω , \pm 5%, 0.25 W | | |
| Input Threshold Level | ON=470 Ω , Short cct <50 Ω , Open cct >100 K Ω | | |
| Operating Temperature Range | -10°C to +50°C | | |
| Storage Temperature Range | -30 °C to +60 °C | | |
| Maximum Humidity | 95% RH non-condensing (at 40 °C) | | |
| Weights (g) & Dimensions (mm) | Module | 360 | L=157 x W=127 x D=35 (Module plus Lid) D=79 (CHQ Module plus Lid plus CHQBACKBOX) (add 235 to module weight when using CHQ-BACKBOX) |
| | DIN Enclosure | 145 | L=119 x W=108 x D=24 |
| Colour and Enclosure Material | CHQ Module & CHQ-BACKBOX White ABS, DIN Module Green ABS, Module Lid Semi-Opaque Black ABS as standard (white version – CHQ-LID(WHT) also available) | | |

Ordering Codes

Product

Analogue Mains Relay Controller Module with SCI
Analogue Mains Relay Controller DIN Module with SCI

Part Number

CHQ-MRC2(SCI)
CHQ-MRC2/DIN(SCI)