

## CONVENTIONAL AUDIO/VISUAL - PART 2



**CLB-E**

**Model CLB-E(RED) is a conventional Beacon for use on 24V Sounder Circuits.**

The unit is fitted with a Fresnel lens and high-intensity LEDs, a design which produces a highly visible flash.

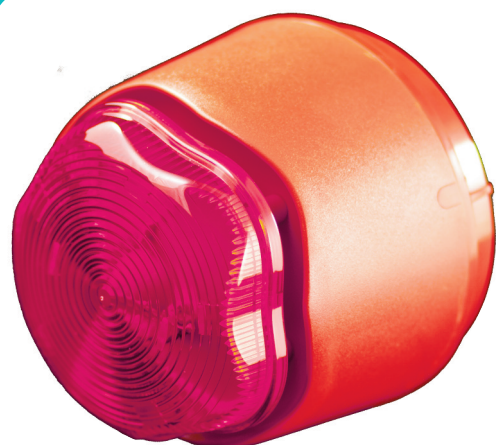
- ▶ High Intensity LED technology
- ▶ Colour-matched to existing detector and base ranges (ivory or white)
- ▶ Fits standard CDX base (YBN-R/6)



**BE-SSB(RED)**

**The BE-SSB(RED) is an electronic conventional sounder for internal use.**

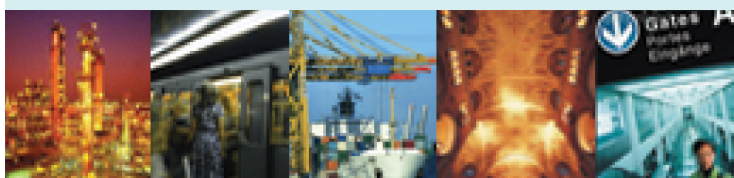
- ▶ Robust design
- ▶ Low current consumption
- ▶ Easy to install
- ▶ Maximum 110dB(A) at 1 metre (dependant on tone selected)
- ▶ 32 user-selectable tones
- ▶ Deep base version available BE-SDB(RED), offers
- ▶ IP66 protection
- ▶ Both models also available in white



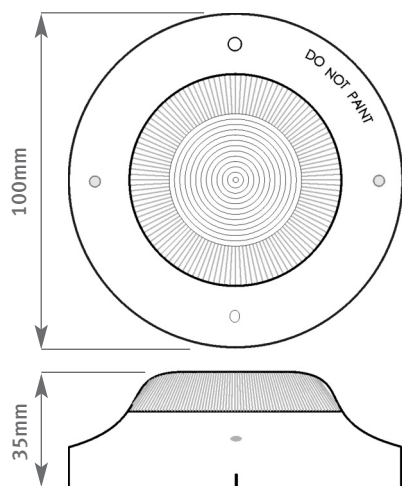
**BEL-SBSB(RED)**

**The BEL-SBSB(RED) is an electronic conventional sounder beacon for internal use.**

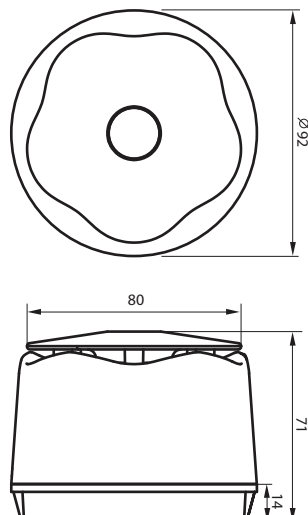
- ▶ Robust design
- ▶ Low current consumption
- ▶ Easy to install
- ▶ Xenon beacon technology
- ▶ Maximum 110dB(A) at 1 metre (dependant on tone selected)
- ▶ 32 user-selectable tones
- ▶ Deep base version available BEL-SBDB(RED), offers IP66 protection
- ▶ Both models also available in white



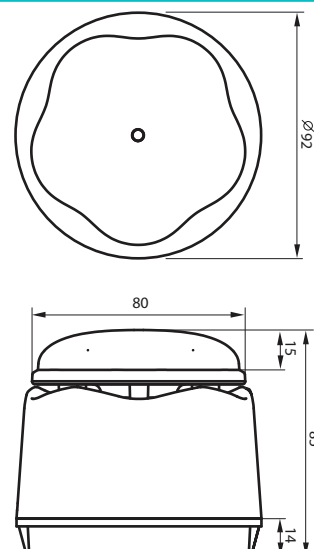
## DIMENSIONS



**CLB-E**



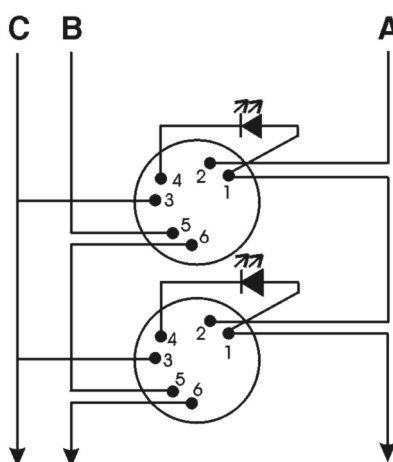
**BE-SSB**



**BEL-SBSB**

## WIRING

KEY: A +ve, B -ve, C Cable Screen



**YBN-R/6 Base for CLB-E**

Please note this device **MUST** be fitted to a sounder/powered circuit, **NOT** to a zone.

## SPECIFICATIONS

Ordering Code	CLB-E(RED)
Operating Voltage	17 - 41 V dc
Operating Current (typ)	4.3 mA (5.0 mA max)
Operating Temperature Range	-10°C to +50°C
Storage Temperature Range	-30°C to +60°C
Maximum Humidity	95% RH - Non Condensing (at 40°C)
Colour / Case Material	Ivory White / ABS
Lens Colour	Transparent Red
Weight (g)	88
Base Fixing Centres (mm)	48 ~ 74

Ordering Codes	BE-SSB(RED) (internal) BE-SSB(WHT) (internal) BE-SDB(RED) (external) BE-SDB(WHT) (external)
Operating Voltage	9 - 30 V dc
Operating Current	6 - 39 mA (dependant on tone)
Operating Temperature Range	-40°C to +70°C
Maximum Sound Output	110 dB(A) at 1 metre (at 24 V dc) (dependant on tone)
Maximum Humidity	75% RH - Non Condensing (at 40°C)
IP Rating	IP45 (internal) IP66 (external)

Ordering Codes	BEL-SBSB(RED) (internal) BEL-SBSB(WHT) (internal) BEL-SBDB(RED) (external) BEL-SBDB(WHT) (external)
Operating Voltage	9 - 30 V dc
Operating Current	6 - 39 mA (dependant on tone)
Strobe Nominal flash energy	40 mA (@ 24 V dc)
Flash rate	60/minute
Lens colours available	Red/Clear*/Green*/Blue*/Amber*)
Operating Temperature Range	-20°C to +55°C
Maximum Sound Output (at 24 V dc)	110 dB(A) at 1 metre (dependant on tone)
Maximum Humidity	75%RH - Non Condensing (at 40°C)
IP Rating	IP45 (internal) IP66 (external)

**HOCHIKI EUROPE (UK) LIMITED**  
Grosvenor Road, Gillingham Business Park,  
Gillingham, Kent, England ME8 0SA  
Telephone: +44 (0)1634 260133  
Facsimile: +44 (0)1634 260132  
e-mail (UK): sales@hochikieurope.com  
e-mail (Non UK): export@hochikieurope.com  
www.hochikieurope.com



Quality System  
Certificate No. 164  
Assessed to ISO9001



Environmental Management System  
Certificate No. EMS 286  
Assessed to ISO 14001 : 1996

Hochiki Europe (UK) Ltd. reserves the right to alter the specification of its products from time to time without notice. Although every effort has been made to ensure the accuracy of the information contained in this document it is not warranted or represented by Hochiki Europe (UK) Ltd. to be a complete and up-to-date description.

PART No. 9-5-0-409/ISS2/JUN12